



Serving The Industry
For 41 years.

Industrial Radial Fans

ER Serisi Tek Emiřli Endüstriyel Radyal Vantilatörler

ER Series Single Inlet Industrial Radial Fans

Kapasite:

1.500.000m³/h maksimum debi
4000mmSS maksimum basınç kaybı

Uygulama Alanları:

Çimento Fabrikaları, Demir – Çelik Endüstrisi, Enerji Santralleri, Döküm fabrikaları, Kimya ve Petrokimya tesisleri, Cam ve Seramik üretim tesisleri, Şeker Fabrikaları, Gıda Fabrikaları, Kazan ve Boaya tesisi üreticileri

Malzeme:

Karbon çelik, Paslanmaz çelik (AISI 316, 316L, 310, 304 vb.), Alüminyum veya PP Kaplama

Özellikler:

750 °C sıcaklığa kadar dayanım
Direkt Akuple, Kayış Kasnaklı ve Kaplin Tahrik Şekilleri.
Geriye eğik kanatlı yapıyla tozlu ve yağlı ortamlarda çalışmaya uygun.
IE3 / IE4 sınıfı enerji verimli motor
Yüksek verimli tasarımıyla minimum enerji tüketimi sağlar.

Capacity:

1.500.000m³/h max air flow
4000mmWG max pressure loss

Applications:

Cement Factories, Iron and steel industry, Power plants, Casting factories, Oil and Gas and Petrochemical Facilities, Glass and Ceramic production, Mining Facilities, Food Facilities, Waste treatment plants, Boiler production

Material:

Carbon or Stainless steel (AISI 316, 316L, 310, 304..etc), Aluminum or Polypropylene (PP) coating

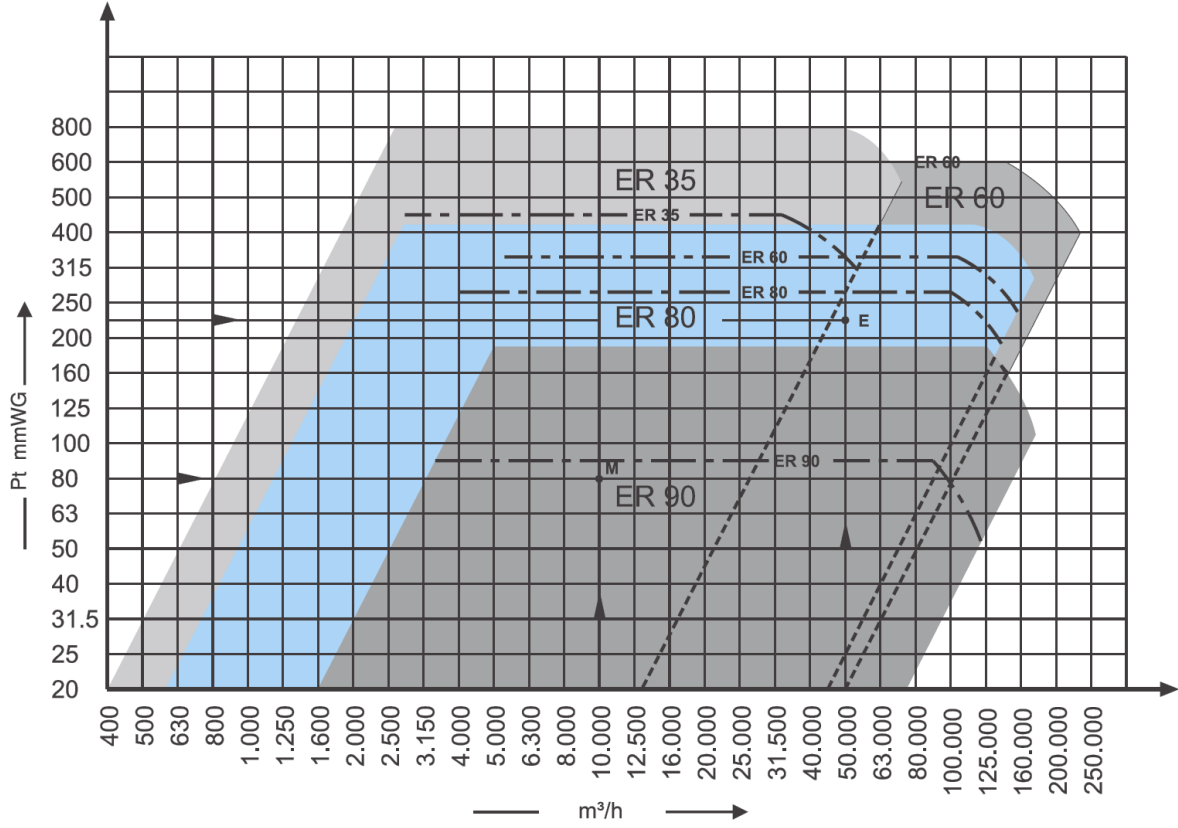
Specifications:

Max. Operating temperature up to 750 °C
Direct Driven, Belt driven and Coupling driven.
Resistant to dusty and oily atmosphere due to the backward curved blade design
IE3 / IE4 class energy efficient motors.



ER Serisi Fanlar Seçim Eğrisi

ER Series Fans Selection Curves

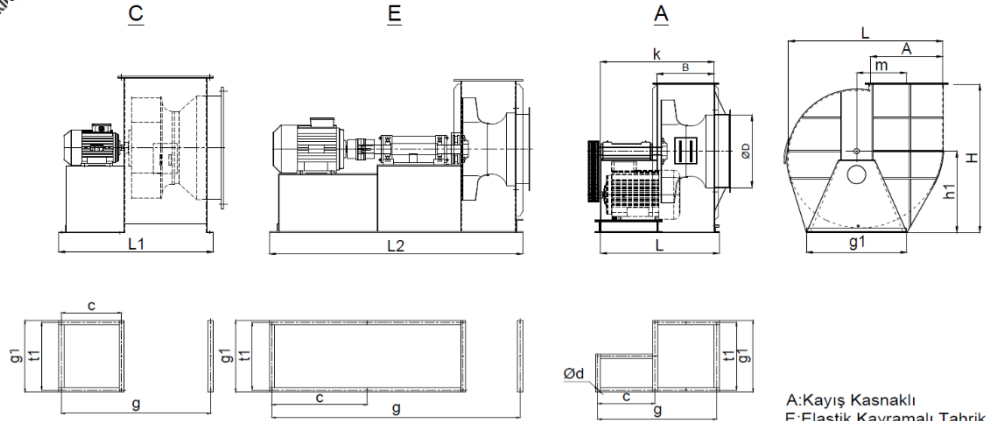
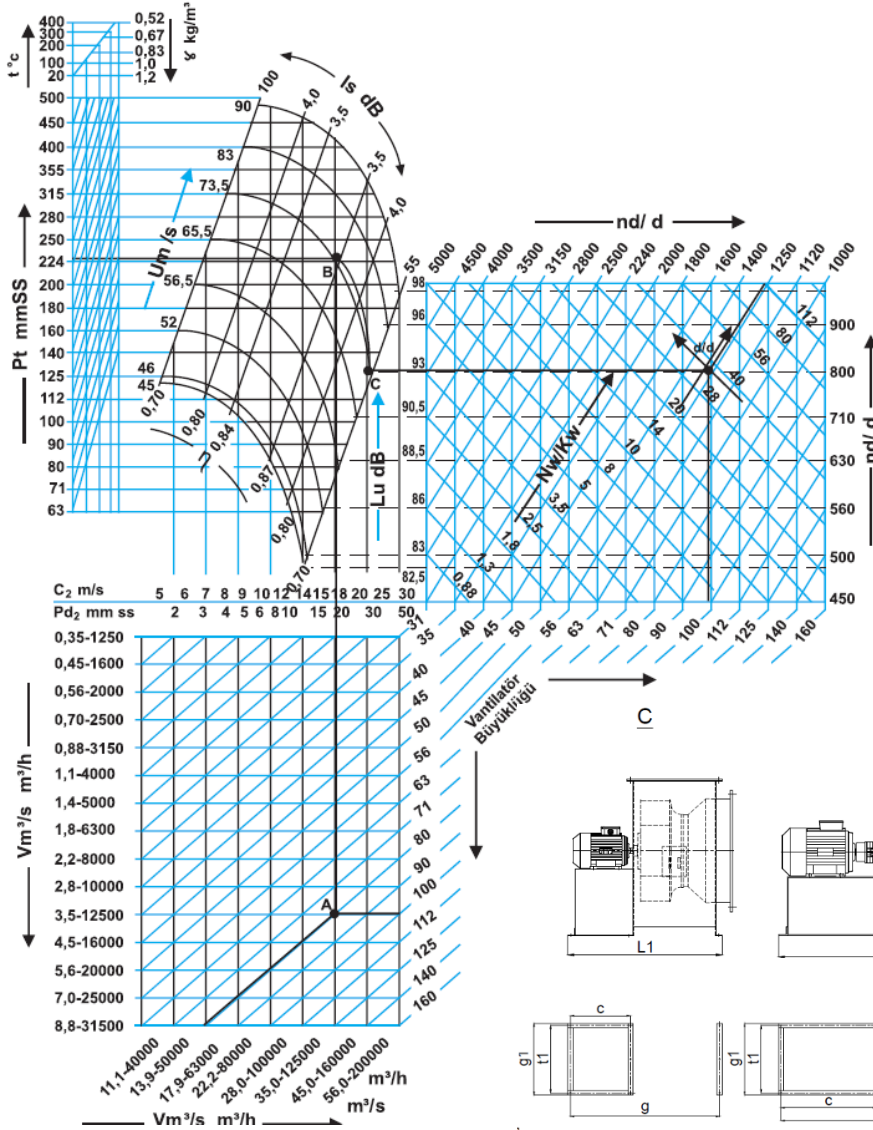


Series	Size	Max. Pressure (mmWG)	Max. Tip Speed (m/s)	Application	
				Fresh air	Dusty air
ER 90	25 - 200	150	60	+	-
ER 80	31 - 160	350	90	+	-
ER 60	31 - 160	500	100	+	-
ER 35	22 - 90	750	112	+	-
ER 25	12,5 - 45	950	112	+	-
EZ 90	35 - 110	150	60	+	-
EZ 80	31 - 140	250	75	+	-
PHD	10A - 87L	1500	140	+	-
PT	20 - 90	1200	120	-	+

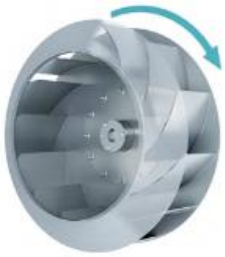


ER80 Serisi Radyal Vantilatör

ER80 Series Radial Fan



A:Kayış Kasnaklı
E:Elastik Kavramalı Tahrir
C:Direkt Akuple Tahrir

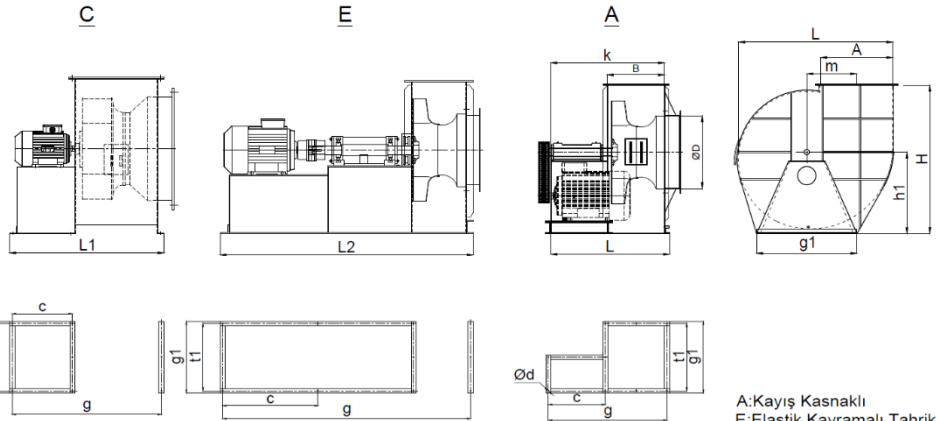
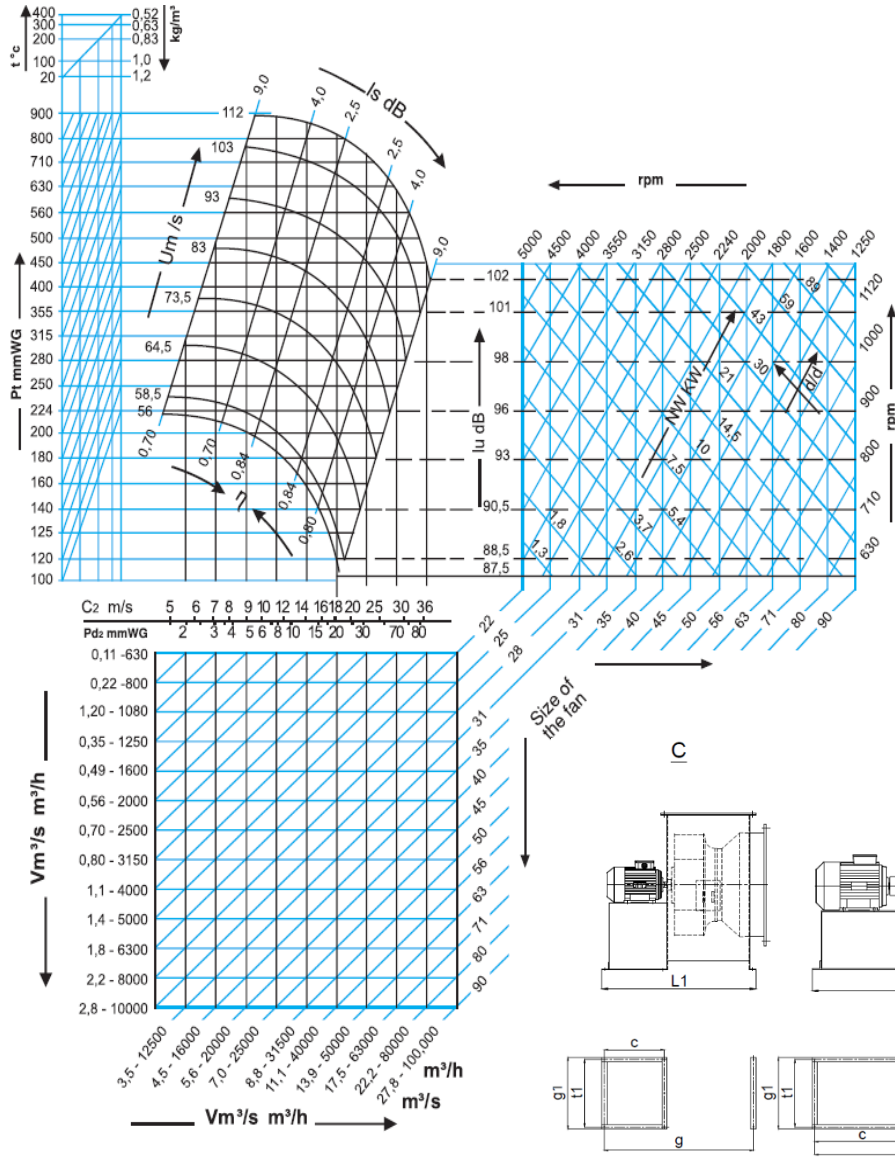


Geriye Eğik kanatlı
Backward curved

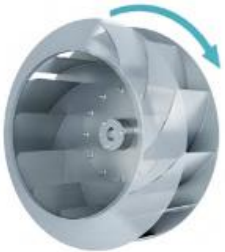
Tip	Size	Dimensions in mm											Pos. GL-360		Weight			
		A	B	ØD	k	m	n	L	y	g	t1	dØ	h1	h2	L	H	GD2	Kg
ER80	31	283	283	316	750	158	214	754	718	400	364	11	310	380	535	560	0,51	76
ER80	35	317	317	355	780	178	231	788	752	400	364	11	320	415	605	600	0,84	83
ER80	40	354	356	398	895	199	250	902	866	485	449	11	355	455	675	655	1,58	106
ER80	45	397	399	447	935	223	272	965	925	590	550	11	400	500	760	750	2,51	130
ER80	50	446	448	501	995	250	306	1014	974	620	580	11	440	560	850	830	4,3	170
ER80	56	500	500	562	1120	282	333	1136	1096	680	640	14	435	620	955	930	5,8	219
ER80	63	558	560	631	1180	318	363	1196	1156	700	660	14	550	685	1070	1035	12,2	288
ER80	71	627	629	708	1270	354	418	1265	1225	820	780	14	615	760	1200	1155	19,4	370
ER80	80	704	704	794	1410	398	456	1405	1365	940	900	14	685	840	1050	1295	32,6	493
ER80	90	790	790	891	1500	447	499	1521	1471	980	930	14	770	940	1510	1450	54,4	613
ER80	100	885	887	1000	1585	501	548	1618	1568	1000	950	14	860	1050	1695	1625	91	760
ER80	112	992	996	1112	1945	563	654	1844	1774	1120	1050	14	965	1160	1895	1820	152	1000
ER80	125	1114	1118	1259	2070	632	715	1966	1896	1250	1180	14	1080	1240	2125	2035	254	1300
ER80	140	1251	1253	1412	2250	709	784	2111	2041	1400	1330	14	1210	1435	2395	2280	425	1700
ER80	160	1405	1407	1585	2480	794	861	2477	2407	1600	1530	14	1360	1600	2685	2550	705	2200

ER35 Serisi Radyal Vantilatör

ER35 Series Radial Fan



A: Kayış Kasnaklı
E: Elastik Kavramalı Tahrik
C: Direkt Akuple Tahrik

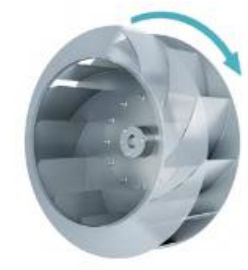
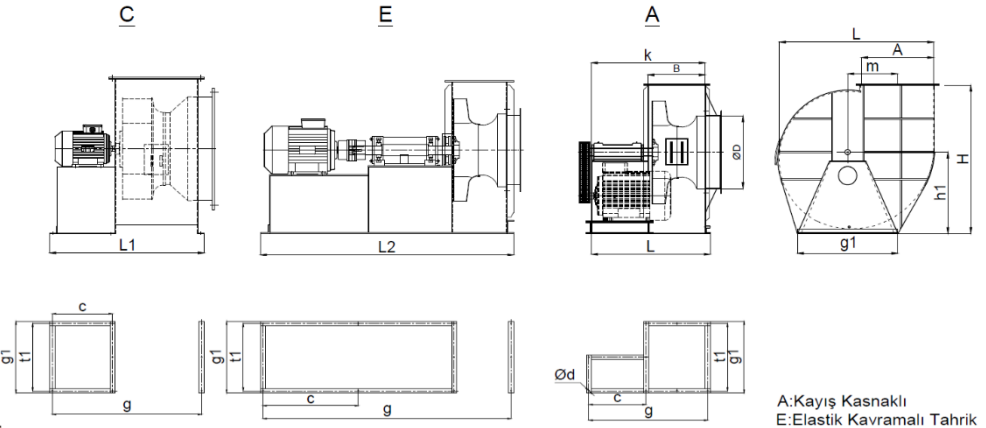
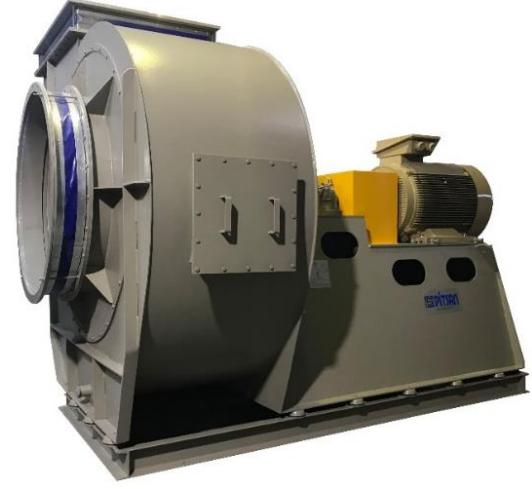
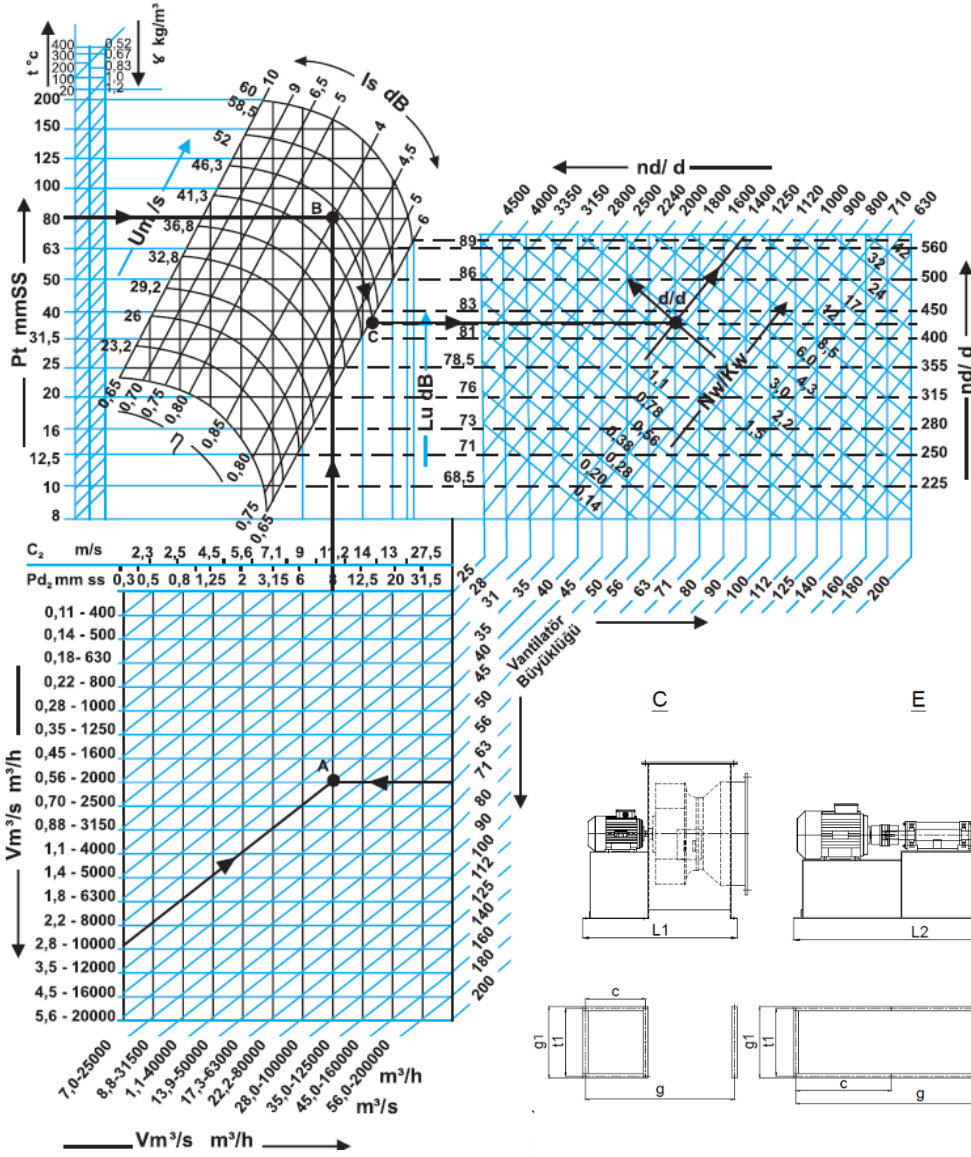


Geriyeye Eğik kanatlı
Backward curved

Tip	Size	Dimensions in mm													Pos. GL-360		Weight	
		A	B	ØD	k	m	n	L	y	g	t1	dØ	h1	h2	L	H	GD2	Kg
ER35	22	283	177	224	776	232	162	783	747	485	449	11	355	455	675	665	0,92	88
ER35	25	317	199	251	800	262	173	825	785	590	550	11	400	500	760	750	1,48	115
ER35	28	366	223	282	335	293	195	849	809	620	580	11	440	560	850	830	2,65	140
ER35	31	397	250	316	960	330	208	976	836	680	640	14	495	620	955	930	4,2	167
ER35	35	446	279	355	1010	371	244	999	859	700	660	14	550	685	1070	1035	8,17	226
ER35	40	500	313	398	1045	415	261	1041	1001	800	780	14	615	760	1200	1155	13	300
ER35	45	559	352	447	1145	466	280	1140	1100	940	900	14	685	840	1340	1295	22,4	411
ER35	50	628	395	501	1215	524	327	1203	1153	980	930	14	770	940	1510	1450	35,4	520
ER35	56	704	441	562	1260	588	351	1249	1199	1000	950	14	860	1050	1695	1625	57,5	630
ER35	63	790	493	631	1415	660	378	1443	1373	1120	1050	14	965	1160	1895	1820	97	795
ER35	71	887	564	708	1475	741	408	1504	1434	1250	1180	14	1080	1240	2125	2035	169	1030
ER35	80	996	622	794	1565	832	470	1572	1502	1400	1330	14	1210	1435	2395	2280	296	1480
ER35	90	1114	697	891	1775	936	510	1748	1678	1600	1530	14	1360	1600	2685	2550	517	1870

ER90 Serisi Radyal Vantilatör

ER90 Series Radial Fan

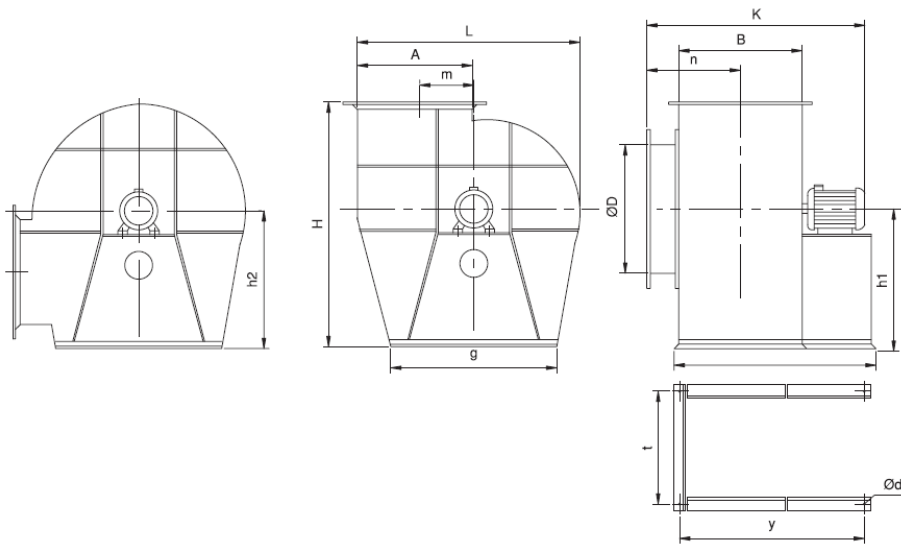


Geriyeye Eğik kanatlı
Backward curved

Tıp	Size	Dimensions in mm													Pos. GL-360		Weight	
		A	B	ØD	k	m	n	L	y	g1	t1	dØ	h1	h2	L	H	GD2	Kg
ER90	25	200	200	251	615	110	167	604	579	300	275	11	220	250	380	400	0,11	47
ER90	28	225	225	282	640	123	180	629	604	340	315	11	250	280	425	450	0,17	55
ER90	31	251	251	316	680	140	207	655	630	380	355	11	280	310	475	505	0,26	64
ER90	35	283	283	355	785	158	244	754	718	400	364	11	310	380	535	560	0,42	74
ER90	40	317	317	398	815	178	261	788	751	400	364	11	320	415	600	600	0,65	83
ER90	45	354	356	447	930	199	281	902	866	485	449	11	355	455	675	665	1,16	99
ER90	50	397	399	501	975	223	303	965	925	590	550	11	400	500	760	750	1,86	131
ER90	56	446	448	562	1025	250	327	1014	974	620	580	11	440	560	850	830	3,25	163
ER90	63	500	500	631	1145	282	358	1136	1096	680	640	14	495	520	955	930	6,14	212
ER90	71	558	560	708	1210	318	384	1196	1156	700	660	14	550	685	1070	1035	11	272
ER90	80	627	629	794	1590	354	418	1265	1225	820	780	14	615	760	1200	1155	17,8	370
ER90	90	704	704	891	1415	398	456	1409	1365	940	900	14	685	840	1340	1295	29,5	490
ER90	100	790	790	1000	1555	447	548	1521	1471	980	930	14	770	940	1510	1450	48,3	627
ER90	112	885	887	1122	1655	501	599	1618	1568	1000	950	14	860	1050	1695	1625	75	731
ER90	125	992	996	1259	1850	563	654	1844	1774	1120	1050	14	965	1160	1895	1820	133	931
ER90	140	1114	1118	1412	1970	632	715	1966	1896	1250	1180	14	1080	1240	2125	2035	238	1228
ER90	160	1251	1253	1558	2100	709	783	2111	2041	1400	1330	14	1210	1435	2395	2280	398	1613
ER90	180	1405	1407	1778	2475	794	850	2477	2407	1600	1530	14	1360	1600	2685	2550	600	2064
ER90	200	1572	1578	1998	2760	880	1000	2698	2698	1800	1730	14	1540	1800	3005	2890	860	2600

ER90 Serisi Direkt Akuple Fan

ER90 Series Direct Driven Fan



TİP / ER	A	B	ØD	m	n	l	y	g	t	Ød	h1	h2	Motor d/d	H	K	L	Ort. Kapasite m³/h	Motor kw/1400
90/25	200	200	250	110	167	460	460	250	225	8	220	250	3000	400	495	380	1000 m³/h	0,25 kw
						460	460						1500		495			
90/28	225	225	282	123	180	485	485	280	255	8	250	280	3000	450	520	425	1500 m³/h	0,25 kw
						485	485						1500		520			
90/31	250	250	316	140	207	545	545	315	275	10	280	310	3000	505	585	475	1700 m³/h	0,25 kw
						520	520						1500		560			
90/35	280	280	355	158	244	600	600	350	310	10	310	380	3000	560	665	535	2200 m³/h	0,37 kw
						550	550						1500		612			
90/40	315	315	398	178	260	700	700	400	360	10	320	415	3000	600	760	600	3150 m³/h	0,55 kw
						585	585						1500		645			
90/45	355	355	447	199	281	650	600	450	410	10	355	455	1500	665	710	675	4000 m³/h	1,1 kw
90/50	400	400	500	223	303	715	665	500	460	10	400	500	1500	750	775	760	5600 m³/h	1,5 kw
90/56	450	450	562	250	327	835	785	560	520	10	440	560	1500	830	895	850	8500 m³/h	3 kw
90/63	500	500	630	282	353	906	850	630	570	14	495	620	1500	930	956	955	12000 m³/h	4 kw
90/71	560	560	710	320	385	1100	1056	710	640	14	550	685	1500	1035	1180	1070	15000 m³/h	5,5 kw
90/80	630	630	800	355	420	1200	1150	820	760	14	615	760	1500	1150	1300	1200	20000 m³/h	7,5 kw

DYNAMIC PRESSURE VALUES ACCORDING TO AIR SPEED AT OUTLET

Speed m/s	1,8	2	2,2	2,5	2,8	3,2	3,6	4	4,5	5	5,6	6,3	7,1	8	9	10	11	12	14	16	18	20	22
Δ Pdn mmWG	0,2	0,24	0,3	0,38	0,48	0,62	0,8	0,98	1,24	1,5	1,91	2,42	3,1	3,9	4,9	6,1	7,4	8,8	12	15,6	20	24,4	29,6



ER Serisi Direkt Akuple Fan

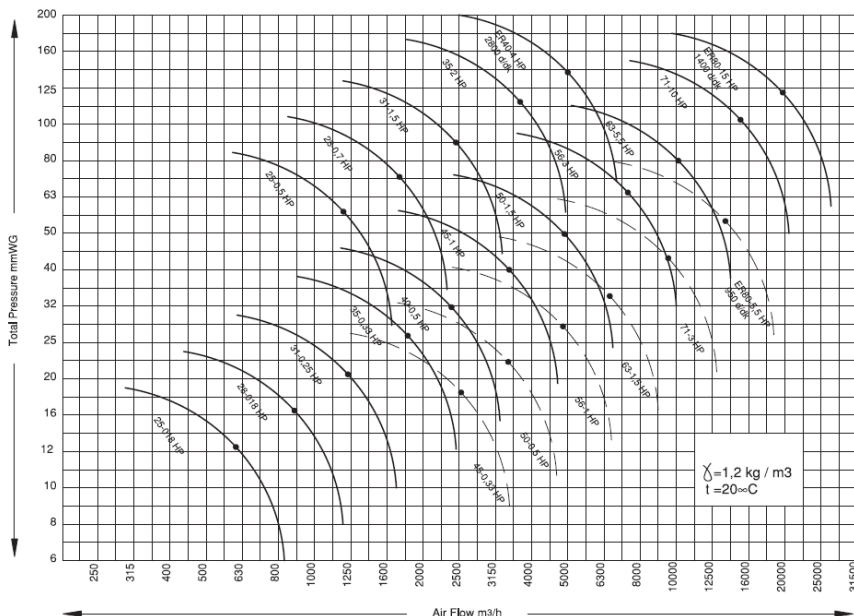
ER Series Direct Driven Fan

Tip	Size	Motor Gücü kW	Fan Speed rpm	Total Pressure (Pt) in 3000rpm																		
				mmWC	28	32	36	40	45	50	56	63	71	80	90	100	112	125	140	160	180	200
ER90	25	0,37	2810	m3/h	1770	1685	1650	1600	1525	1335	1230	1050	800									
ER90	28	0,55	2820	m3/h		2500	2450	2380	2320	2250	2125	2000	1800	1560	1200							
ER90	31	1,1	2840	m3/h				3500	3400	3350	3250	3150	2975	2800	2500	2200	1700					
ER90	35	2,2	2850	m3/h						5000	4950		4750	4550	4200	4000	3550	3150	2350			
ER90	40	3	2910	m3/h								7100	7000	6850	6490	6200	6000	5600	5000	4250	3160	

Tip	Size	Motor Gücü kW	Fan Speed rpm	Total Pressure (Pt) in 1500rpm																		
				mmWC	10	12	16	18	20	25	32	36	40	45	50	56	63	71	80	90	100	112
ER90	25	0,25	1380	m3/h	750	650	500	400														
ER90	28	0,25	1380	m3/h	1160	1080	945	855	1500													
ER90	31	0,25	1380	m3/h		1700	1650	1425	1700													
ER90	35	0,37	1390	m3/h		2475	2375	2250	2180	2000	1420	1120										
ER90	40	0,55	1365	m3/h			3350	3300	3200	3139	2850	2420	2000	1525								
ER90	45	0,75	1410	m3/h					4900	4750	4400	4100	4000	3500	3100	2250						
ER90	50	1,5	1430	m3/h						6750	6700	6400	6200	5700	5600	5000	4360	3250				
ER90	56	3	1430	m3/h							10000	9800	9700	9500	9000	8700	8000	7100	6300	5000		
ER90	63	4	1455	m3/h									13500	13400	13000	12750	12500	11600	11000	10000	8500	6300
ER90	71	5,5	1465	m3/h														17500	16000	15000	12500	
ER90	80	11	1465	m3/h															25000	20000	16000	

Tip	Size	Motor kW	Fan Speed rpm	Total Pressure (Pt)																		
				mmWC	63	71	80	90	100	112	125	140	160	180	200	224	250	280	315	355	400	450
ER80	31	2,2	2840	m3/h	5000	4350	4150	4000	3890	3350	3150	2500										
ER80	35	3	2850	m3/h			6300	5970	5460	5240	5000	4890	4000	3360	2500							
ER80	40	5,5	2910	m3/h					9560	9150	8370	8000	7720	6900	6300	4000	3150					
ER80	45	11	2945	m3/h							12500	11920	11000	10740	10428	10000	9630	8000	5000			
ER80	50	18,5	2950	m3/h									18200	17800	16000	15435	14200	13600	12500			
ER80	56	4	1455	m3/h	12500	11685	10840	10000	8960	8000												
ER80	63	7,5	1465	m3/h	18000	17200	16840	16000	15490	13260	12500	10000	8000									
ER80	71	15	1465	m3/h			25000	24120	23740	22630	21710	20000	18440	16000								
ER80	80	22	1470	m3/h					37546	35610	33680	32310	31500	28313	25000	20000						
ER80	90	45	1470	m3/h							50000	48040	46212	45000	42960	40000	36830	31500				

Tip	Size	Motor Gücü kW	Fan Speed rpm	Total Pressure (Pt)																		
				mmWC	90	100	112	125	140	160	180	200	224	250	280	315	355	400	450	500	560	630
ER60	31	4	2850	m3/h				6300	6000	5600	5300	5000	4500	3550	2500							
ER60	35	7,5	2920	m3/h						9450	9000	8500	8000	7100	6300	5000	3550					
ER60	40	15	2945	m3/h									12500	12000	11200	10460	10000	9000	7100	5000		
ER60	45	22	2950	m3/h										18000	17000	16000	15000	14000	12500	10000	7100	
ER60	50	5,5	1465	m3/h	12500	11200	10750	10000	9000	7100	5000											
ER60	56	11	1465	m3/h		18000	17860	16000	14000	13000	12500	10000	7100									
ER60	63	18,5	1470	m3/h					25000	22400	21800	20000	18000	16000	10000							
ER60	71	30	1470	m3/h							35500	33000	31500	29000	28000	25000	20000	14000				



EZ Serisi Çift Emişli Radyal Ventilatör

EZ Series Double Inlet Radial Fan

Kapasite:

2.500.000m³/h maksimum debi
500mmSS maksimum basınç kaybı

Uygulama Alanları:

Yüksek debi gerektiren endüstriyel prosesler

Özellikler:

Çift emişli, kayış kasnaklı
Daldırma galvaniz ve paslanmaz malzeme opsiyonlu
Yüksek sıcaklıktaki uygulamalarda çift girişli, cepli tasarım

Capacity:

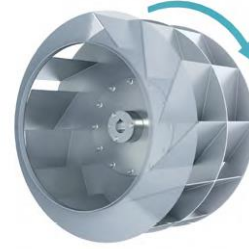
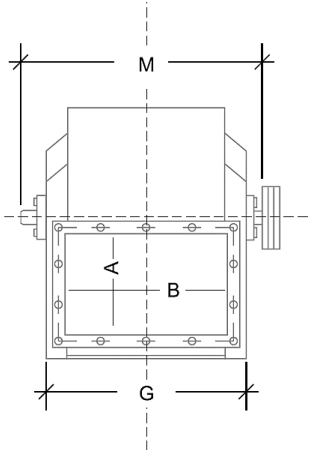
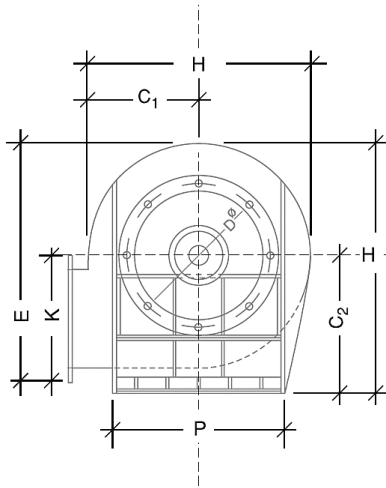
2.500.000m³/h max air flow
500mmWG max pressure loss

Applications:

For industrial processes with higher air flow requirement.

Specifications:

Double inlet, belt driven
Hot dip galvanized / Stainless steel options
Double inlet pocket design for high temperature applications



Geriyeye Eğik kanatlı
Backward curved

Type	Size	Dimensions in mm											
		A	B	C1	C2	D	E	F	G	H	K	M	P
EZ	90/35	316	501	208	415	355	630	680	575	578	365	665	440
EZ	90/40	355	562	310	455	396	703	753	636	644	405	726	480
EZ	90/45	398	631	350	500	447	785	834	717	725	451	805	530
EZ	90/50	447	708	395	560	501	886	935	814	816	511	914	585
EZ	90/56	501	794	450	620	562	992	1042	900	922	570	1000	665
EZ	90/63	562	891	500	685	631	1105	1156	997	1030	633	1131	735
EZ	90/71	631	1000	550	768	708	1235	1290	1106	1144	705	1238	825
EZ	90/80	708	1120	610	840	794	1390	1433	1226	1275	797	1330	905
EZ	90/90	794	1258	690	940	891	1554	1606	1384	1437	888	1524	1010
EZ	90/100	891	1412	780	1050	1000	1737	1797	1540	1618	990	1712	1140
EZ	90/112	1000	1584	860	1160	1122	1952	1958	1732	1800	1114	1904	1270
EZ	90/125	1122	1778	970	1240	1259	2183	2180	1926	2024	1243	2098	1400
EZ	90/140	1259	1994	1070	1435	1412	2440	2488	2142	2253	1386	2314	1550
EZ	90/160	1412	2238	1200	1600	1585	2740	2783	2406	2527	1558	2588	1730
EZ	90/180	1585	2510	1340	1800	1778	3068	3128	2680	2830	1740	2910	1950
EZ	90/200	1778	2817	1500	2000	1995	3443	3490	3007	3170	1953	3220	2160
EZ	90/225	1998	3160	1690	2240	2240	3785	3915	3360	3570	2110	3600	2460

DASK Serisi Sık Kanatlı Radyal Fan

DASK Series Forward Curved Fan

Kapasite:

15.000m³/H debiye kadar ulaşır.

Uygulama alanları ve özellikleri:

Taze havalı ortamlar için uygundur.
Alçak basınçlı ve sık kanatlıdır.
Sık kanatlı çift emişli ve direkt akuple.

Capacity:

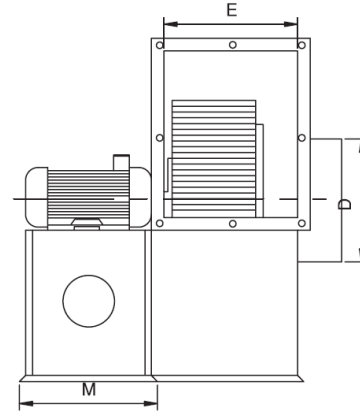
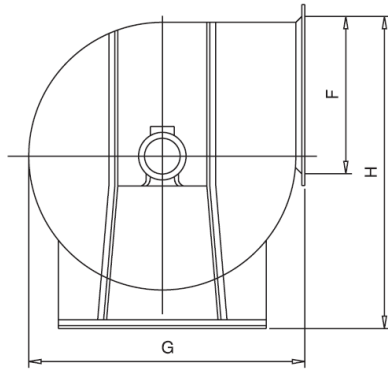
Air flow up to 15.000m³/h

Application and Specifications:

For Fresh air atmospheres.
Forward curved impeller.
Single inlet, direct driven.



Öne eğik/Sık kanatlı
Forward curved



Type	Size	Air Flow m ³ /h (max)	Pressure mmWC (max)	Motor kW	Fan Speed rpm	Dimensions in mm				
						H	G	E	F	D
DASK	200	1320	30	0,25	1450	405	340	130	250	162
DASK	225	2000	38	0,55	1450	450	375	145	285	182
DASK	250	2500	44	0,75	1450	495	415	165	325	202
DASK	280	4000	58	1,5	1450	562	465	180	362	226
DASK	315	5520	80	2,2	1450	562	465	180	362	226
DASK	355	6500	86	3	1450	700	565	230	450	292
DASK	400	9100	115	5,5	1450	775	650	255	505	322
DASK	450	15000	160	11	1450	915	715	285	575	365

P Tipi Alüminyum Döküm Radyal Fan

P Series Aluminum Fans

Kapasite:

10.000m³/H debiye kadar.

100 mmSS basınçlı.

Malzeme:

Alüminyum döküm gövdeli, ileri eğik kanatlı.

Uygulama alanları ve özellikleri:

Brülör yakma havası fanı olarak kullanılır.

Alüminyum döküm gövde sayesinde korozyona dayanıklıdır

Capacity:

Air flow up to 10.000m³/h

Max. total pressure is 100mmWG

Application and Specifications

Suitable to use in burners.

Resistant to corrosive atmospheres

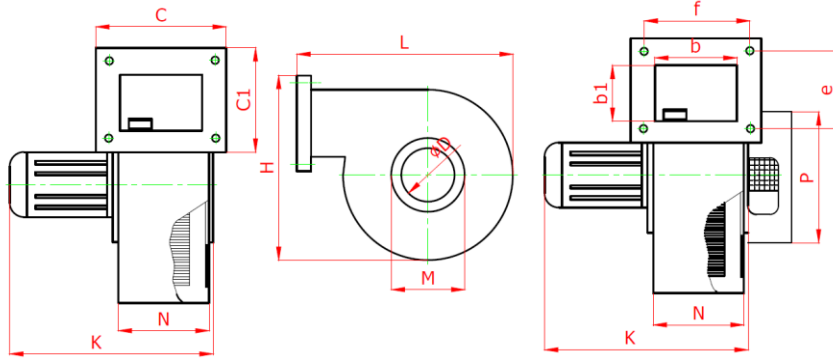
Material:

Forward curved blades

Aluminum casted body.



Öne eğik/Sık kanatlı
Forward curved



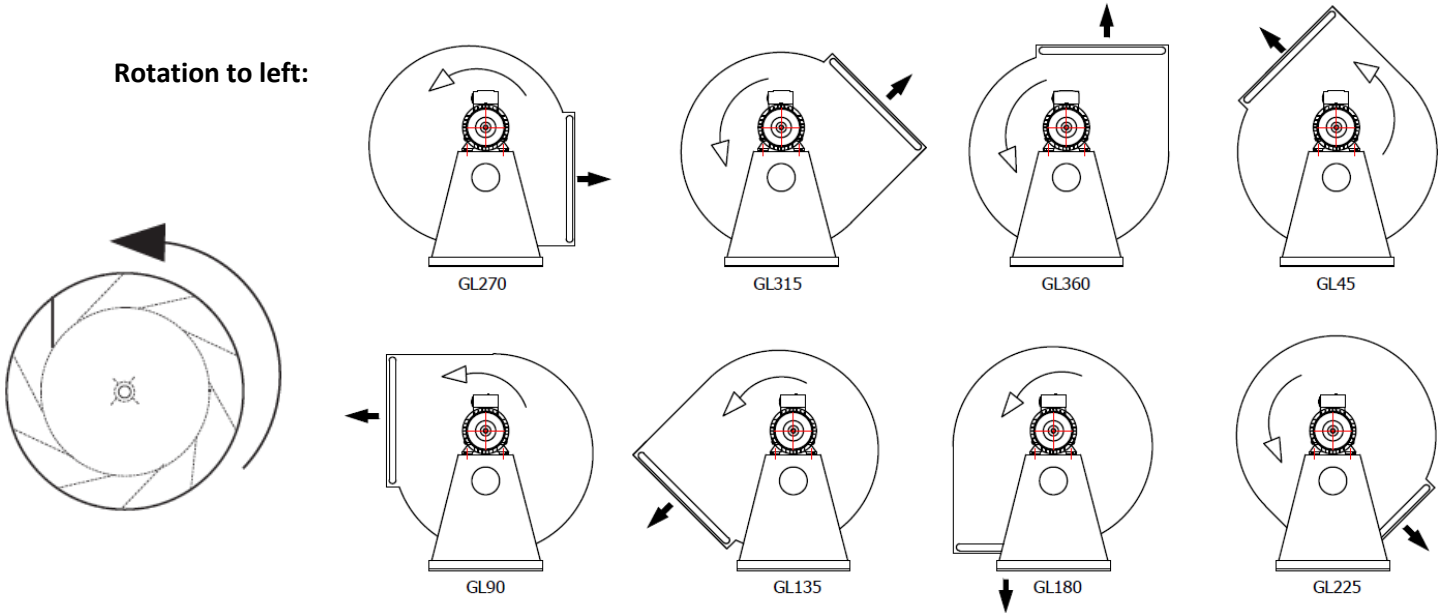
Type	Air Flow m ³ /h	Pressure mmWC	Motor kW	Fan Speed rpm	Impeller		Dimensions in mm										Weight (Kg)	
					Diam. Ømm	Width mm	C	C1	B	B1	N	H	K	L	e	f		ØD
P1	800	20	0,25	2900	140	72	130	110	90	60	110	215	315	215	85	110	100	7
P2	2000	30	0,37	2900	160	80	145	155	100	105	130	300	320	300	120	120	110	10
P3	2500	60	0,55	2900	180	102	150	150	110	110	130	300	365	305	125	125	140	13
P4	2500	90	0,75	2900	216	94	160	165	115	110	155	375	370	375	125	140	160	20
P4	3500	90	1,1	2900	216	128	160	165	115	110	155	375	370	375	125	140	160	20
P5	3500	100	1,1	2900	248	128	200	210	160	160	160	470	735	400	160	165	180	25
P5	4000	100	1,5	2900	248	128	200	210	160	160	160	470	735	400	160	165	180	25
P6	5500	150	3	2900	248	128	200	210	160	160	160	470	735	400	160	165	180	30
P6	6000	150	4	2900	248	128	200	210	160	160	160	470	735	400	160	165	180	30
P7	6500	170	4	2900	268	102	240	-	-	-	230	490	600	500	215	-	230	50
P8	7500	170	5,5	2900	268	102	240	-	-	-	230	490	600	500	215	-	230	65

Vantilatör Poz Notasyonu

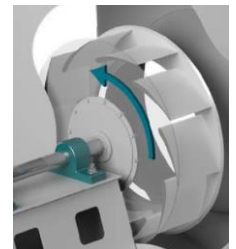
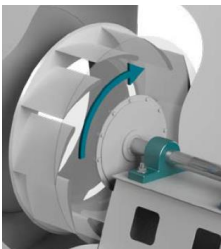
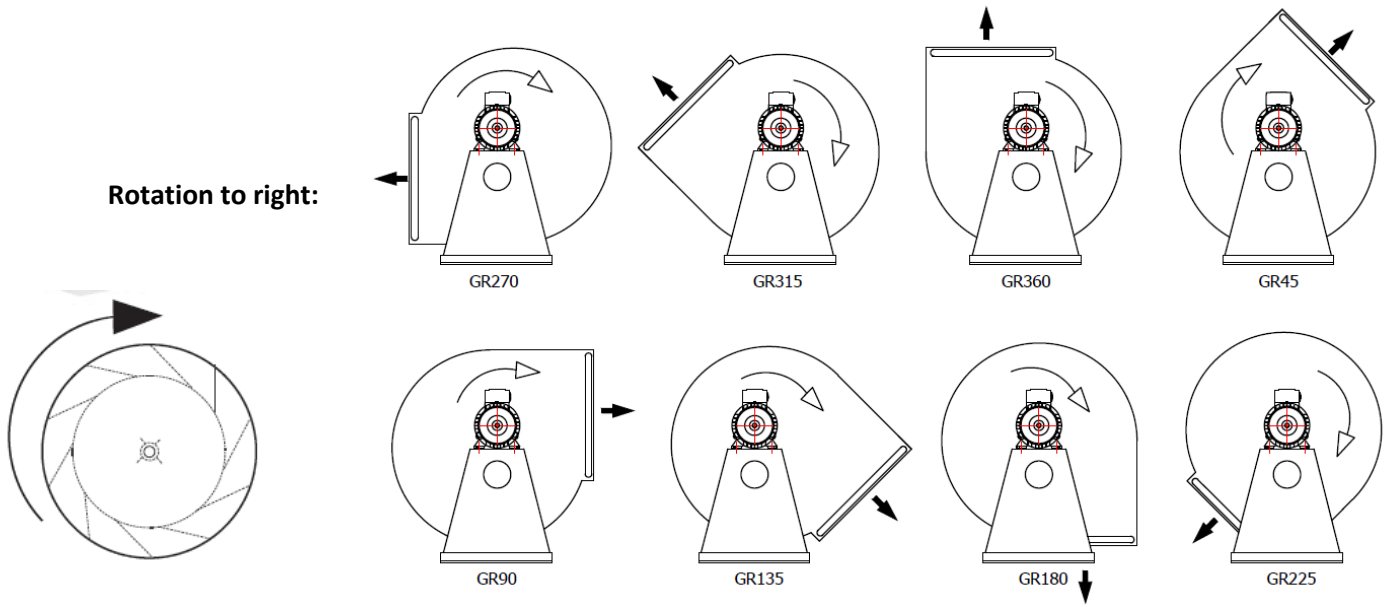
Fan Discharge Position

Motor Tarafından Bakıldığında / Rotation viewed from drive side

Rotation to left:




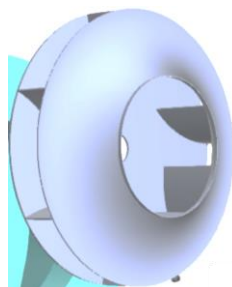
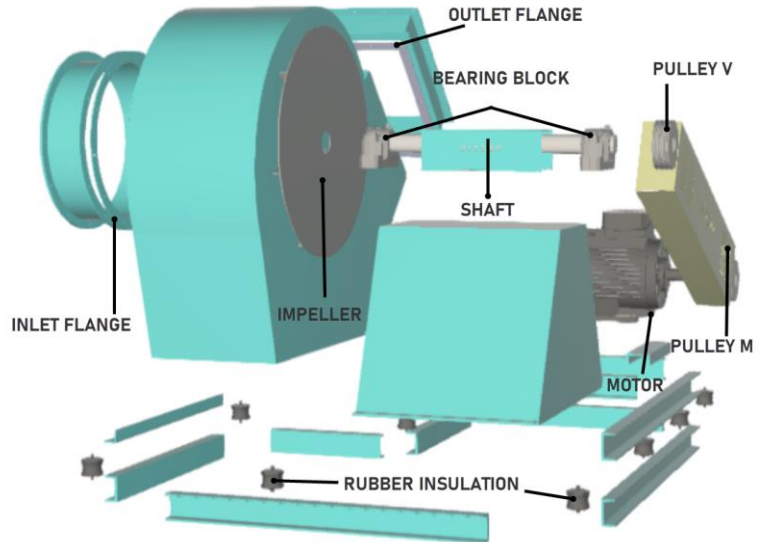
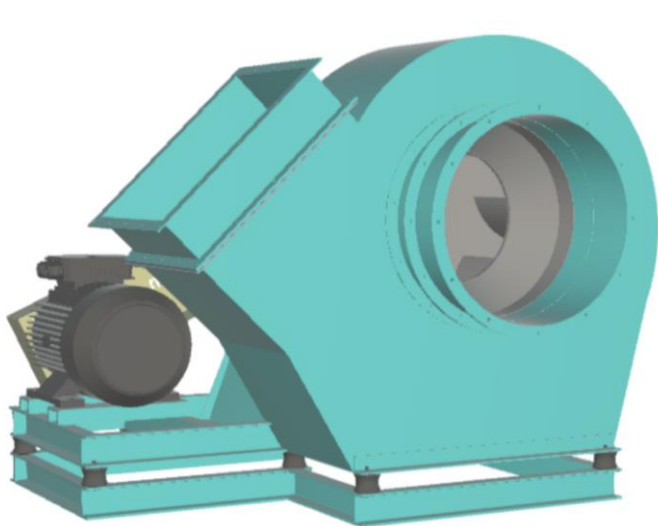
Rotation to right:



Fan Tahrik Şekilleri

Drive type options

			
	Direct Driven / Direkt Akuple (DA)	Belt Driven / Kayış Kasnaklı (KK)	Coupling Driven / Kaplin Akuple (KA)
Efficiency	High	Low	Medium
Fan Speed (rpm)	750 - 1000 - 1500 - 3000	Between 0 - 3600rpm	750 - 1000 - 1500 - 3000
Max. Motor Power	Max. 110kW	Max. 200kW	No Limit
Potential Speed and capacity increase	Max +10%, Min. - 70% with VSD	With Belt-Pulley replacement up to shaft power permission	Max +10%, Min. - 70% with VSD
Maximum operating temperature	+ 80°C	No Limit	No Limit
Cost	Low	Medium	High
Operating Costs and Failure Problem	Low	High	Medium
Can Dust Pass Through the Fan?	No	Yes	Yes



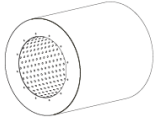
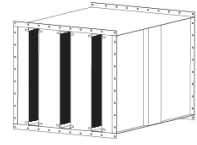
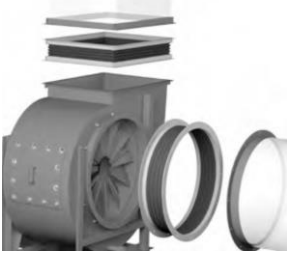
IMPELLER



INLET CONE

Aksesuarlar

Accessories



Temizleme kapağı	Inspection door
Tahliye tapası	Drain plug
Çift şase	Double frame
Vibrasyon takozu	Anti vibration mounts
Karşı flanş	Counter flange
Esnek brandalı bağlantı elemanı	Flexible connection
Soğutma pervanesi	Cooling disk
Emiş tel kafesi	Inlet protection cage
Gövde izolasyonu	Heat insulation
Susturucu	Silencer
Spark-Proof koruma	Spark-proof protection
Drallregler	Drallregler
Vibrasyon sensörü	Vibration sensor
Sıcaklık Sensörü	Temperature sensor



Malzeme Alternatifleri

Material Options

Karbon Çelik (ST-37)	C-Steel
AISI 304 Cr-Ni (Su buharı)	AISI 304 Cr-Ni (Water vapour)
AISI 316 Cr-Ni (Korozif ortam)	AISI 316 Cr-Ni (Corrosive atmosphere)
AISI 310 Cr-Ni (Yüksek sıcaklık)	AISI 310 Cr-Ni (High temperature)
PP (Polipropülen) kaplama	PP (Polypropylene)
Epoksi Boyalı	Epoxy Paint
Kauçuk Boyalı	Rubber paint

Sertifikalar

Certificates





Firuzköy Mahallesi, Firuzköy Bulvarı No:66 Avcılar 34325
Istanbul/ Turkey

T: +90 212 428 18 85

F: +90 212 428 16 61

pitsan@pitsan.com

www.pitsan.com